



ADDRESSES AND TELEPHONE NUMBERS

Building Address:
842 S. Broadway
Los Angeles, CA 90014

Main Telephone: (877) 677-4386
Main Office Fax: (213) 622-1939

Mailing Address:
P.O. Box 55047
Los Angeles, CA 90055

Web Site: www.laorpheum.com
E-mail: info@laorpheum.com

THEATRE STAFF

CEO	Steve Needleman
Chief Financial Officer	Mark Cohen
General Manager	Christian Andrade
Events Coordinator	Clyde Rupel

BOX OFFICE

Hard Ticket Box Office
Outside Ticket Agency
Ticketmaster (213) 381-2000

SEATING CAPACITY

Fixed Seats: Orchestra	1,019
Mezzanine	146
Balcony	781
Boxes	30
Subtotal	1,976

<p align="center">STAGE HOUSE</p> <p>FLY SYSTEM House Curtain Front curtain operates as manual fly from SL fly rail Screen curtain operates as electric traveler SL deck Rigging System Type: Single Purchase Counterweight Weight: 4,500 lb. available Line Sets: 20 sets at 6-24 in. o/c with 4 lift lines per set Arbors: 750 lb. capacity House Pipes: 52 ft. long with 58 ft. of travel from deck Line sets are not moveable Block and Falls available: 3:2 (1) No spot wheels or hemp available</p> <p>PERMANENT INSTALLATIONS Over Stage (all dimensions are from smoke pocket) Movie Screen (1) at 6'-0" Travelers (1) at 4'-0" On Deck Trap (1) 2' x 2' in center of stage</p> <p>ORCHESTRA PIT Non-adjustable at 5 ft. below stage level Apron overhangs US wall of pit by 2'0" Pit has center lift Pipe organ console in SR corner of pit (can be removed) Pit cover available to extend stage 8 ft. x 48 ft.</p>			<p align="center">BACKSTAGE</p> <p>LOADING Loading Door: 7' 10" high x 7' 3" wide Trucks: Always park and unload in adjacent parking lots Loading Dock: None; loading door at alley level</p> <p>WARDROBE Location: Basement Access: Elevator SR Facilities: Washer and dryer</p> <p>DRESSING ROOMS Star Room (1): Including 1 full and 1 half bath SR on 2nd floor Small Rooms (2): (1) SR in basement (incl. toilet) (1) SR on 3rd floor Chorus Rooms (4): Including full bath (3) SR in basement (1) SR on 3rd floor Other Rooms (1): Production office in basement SL Dressing room elevator requires operator</p> <p>STORAGE & REHEARSAL AREAS Rehearsal Space: 20' x 40' located under stage Storage Space: see rehearsal space above</p>																																																								
<p align="center">ELECTRICS</p> <p>ROAD SERVICE POWER</p> <table border="1"> <thead> <tr> <th>Panel</th> <th>Phase</th> <th>Amp</th> <th>Circuit Protection</th> <th>Use</th> <th>Location</th> </tr> </thead> <tbody> <tr> <td>A</td> <td>3</td> <td>400</td> <td>fuse</td> <td>dimmers</td> <td>DSR side wall</td> </tr> <tr> <td>B</td> <td>3</td> <td>400</td> <td>fuse</td> <td>dimmers</td> <td>USR side wall</td> </tr> <tr> <td>C</td> <td>3</td> <td>400</td> <td>fuse</td> <td>dimmers</td> <td>USL back wall</td> </tr> <tr> <td>D</td> <td>3</td> <td>400</td> <td>fuse</td> <td>dimmers</td> <td>DSL under lobby</td> </tr> <tr> <td>E</td> <td>3</td> <td>60</td> <td>fuse</td> <td>motors</td> <td>SL in grid</td> </tr> <tr> <td>F</td> <td>3</td> <td>100</td> <td>fuse</td> <td>audio</td> <td>SL on back wall</td> </tr> <tr> <td>G</td> <td>3</td> <td>200</td> <td>fuse</td> <td>dimmers</td> <td>843 Parking lot</td> </tr> <tr> <td>H</td> <td>3</td> <td>50</td> <td>fuse</td> <td>Sure Power</td> <td>843 Parking lot</td> </tr> </tbody> </table> <p>FRONT OF HOUSE Continuous balcony rail with 30 dimmer circuits, box booms left and right with 12 dimmer circuits each side, truss position above balcony rail with 60 dimmer circuits. All dimmer circuits patch to fly gallery above stage right.</p> <p>LIGHTING FIXTURES 44 S4 ellipsoidals; (2) 40 ft. pre-rig truss with 25 Elation Fuze Par Z175 RGBW with Zoom</p> <p>FOLLOWSPOTS House Followspots: (2) Lycian M2 Modular follow spots w/ 1200W, (1) Altman Voyager w/ 400W in booth Followspot Booths: (1) booth with a maximum of (3) spots Booth Power: Three phase, 60 amps</p>			Panel	Phase	Amp	Circuit Protection	Use	Location	A	3	400	fuse	dimmers	DSR side wall	B	3	400	fuse	dimmers	USR side wall	C	3	400	fuse	dimmers	USL back wall	D	3	400	fuse	dimmers	DSL under lobby	E	3	60	fuse	motors	SL in grid	F	3	100	fuse	audio	SL on back wall	G	3	200	fuse	dimmers	843 Parking lot	H	3	50	fuse	Sure Power	843 Parking lot	<p align="center">DIMMERS & CONTROL</p> <p>Dimmers 3 racks of 96 Sensor 3 Dimmers @ 20 amps each; input connectors are 48 @ 6-circuit Socapex on Stage Right fly gallery. Cabling to connect pre-rig trusses to dimmers included. All front of house circuits are patchable via socapex on the fly gallery. 84 D20 Dimmer Modules. 60 TR20SAF ThruPower Modules.</p> <p>Console ETC Ion with 2x20 Fader wing, (1) 18" monitor , (2) 19" Touchscreen monitor, mouse and keyboard</p>		
Panel	Phase	Amp	Circuit Protection	Use	Location																																																						
A	3	400	fuse	dimmers	DSR side wall																																																						
B	3	400	fuse	dimmers	USR side wall																																																						
C	3	400	fuse	dimmers	USL back wall																																																						
D	3	400	fuse	dimmers	DSL under lobby																																																						
E	3	60	fuse	motors	SL in grid																																																						
F	3	100	fuse	audio	SL on back wall																																																						
G	3	200	fuse	dimmers	843 Parking lot																																																						
H	3	50	fuse	Sure Power	843 Parking lot																																																						

SOFT GOODS	PORTABLE STAGING
<p>DRAPES House Curtain Red 25 oz. velour with gold fringe at bottom 100% fullness, unlined 2 panels @ 30'h x 27" w Screen Curtain Gold plush velour 100% fullness, unlined 2 panels @ 25'h x 27" w</p> <p>Other vintage drapes available for rental</p> <p>LEGS AND BORDERS Legs Black 25 oz. velour, no fullness 4 pairs @ 30'h x 15'w Borders Black 25 oz. velour, no fullness 4 @ 12'h x 60'w</p> <p>BACKDROPS White seamless muslin cyc, 30'h x 54' w Black 25 oz. velour, no fullness, 2 pc 30'h x 27' w</p>	<p>PLATFORMS 18 Wenger Versalite platforms @ 4' x 8' with natural (tan) color surface - require 6 legs each</p> <p>LEGS 96 @ 8" 96 @ 16" 96 @ 24" 96 @ 32"</p> <p>STAIRS (2) 4-step articulating stairway for 16 to 32" stage heights</p> <p>STORAGE 2 rolling storage carts with a capacity of 8 units each</p>
VIDEO	DATA/TELECOM
<p>MONITORS Each Dressing Room is equipped a monitor.</p> <p>SWITCHING Video patch bay in stage basement</p> <p>INPUTS/OUTPUTS Distributed throughout the house, stage and offices</p>	<p>PHONE LINES Up to 20 additional lines can be activated through Production Networking as needed. Can be accessed at the second floor offices or the basement under the stage.</p> <p>DATA LINES Theatre has a 250 MBPS fiber line. Ask to see our Internet Rate Sheet. User must have network card installed on their PC. Data lines can be patched to many locations in the theatre. Theater is also equipped with 80 Wi-Fi Access Points.</p>
LABOR AND RENTALS	<p>SWITCHING Phone and data lines are terminated in patch bays at three locations – under stage, second floor offices and basement lobby. From there they can be patched to locations throughout the theatre.</p> <p>INPUTS/OUTPUTS Panels with up to 4 phone and 4 data lines (RJ45) are available at various locations in the lobbies, offices, stage and dressing rooms.</p>
<p>Stage labor and tech rentals normally provided by: SAS Owner: Mike Klousia Phone : (562)292-6204</p> <p>Data/phone lines normally provided by: Production Networking Phone: (323)300-6445</p>	

FILM PROJECTION	FILM SOUND
<p>Projectors</p> <p>(2) Simplex XL 35 MM with 4,200 watt Xenon lamps and XELamp 8506 Power supply. Simplex 5-star sound mechanism with RSTR2000 LED and BACP reverse scanner; Dolby digital 701 sound heads</p> <p>(1) Christie CP 4325-RGB 4K Laser Cinema Projector with up to 25,000 lumens, Integrated 4K media server w/ 3tb storage, Dolby CP850 Sound Processor, Barco ImagePro-II Video Scaler</p> <p>Processing</p> <p>(1) Ultra Stereo JS205/295 Stereo Processor</p> <p>(1) Dolby DA 20 Digital Sound Processor</p> <p>(1) Tascam CD-A500 CD and cassette player for non-sync</p> <p>(1) Dolby CP650 Sound Processor for 35mm film projectors</p> <p>Interlock</p> <p>(2) Westrex RA1728 35MM dubbers for synchronous double system interlock to 1, 3, 4 or 6 track 35mm mag film with Dolby A or SR. The interlock system can also generate time code for double system digital playback. The interlocked machine can be 1, 3, 4 or 6 discrete or 2:3 or 2:4.</p> <p>Screen</p> <p>Hurley seamed, perforated screen 22' x 44'</p> <p>Masking</p> <p>Top and bottom masking fixed on screen frame to an opening of 19'3" top to bottom. Side masking is acoustically transparent black drape on screen frame, adjustable by motor, with the following presets:</p> <ul style="list-style-type: none"> • 1 (cinemascope 2.35:1) 43 ft side to side • 2 (standard 1.85:1) 35 ft side to side • 3 (video 1.66:1) 31.5 ft side to side • 4 (silent 1.33:1) 25 ft side to side <p>Side masking is infinitely adjustable to manual settings anywhere between #1 and #4</p> <p>Throw from 35mm Projector to Screen</p> <p>110 ft at a downward angle of approximately 22 degrees</p> <p>Throw from 4K Laser Projector to Screen</p> <p>48 ft with no angle from the front of the balcony.</p>	<p>SURROUND SOUND</p> <p>Speakers</p> <p>(24) L'Acoustics X12 Passive Coaxial Speaker. Orchestra left, right and rear. Balcony left, right and rear.</p> <p>Amps</p> <p>(6) L'Acoustics LA4X Amplifier</p> <p>(18) Lab Gruppen FP6400 Amplifier</p> <p>(6) Lab Gruppen FP3400 Amplifier</p> <p>(4) QSC RMX-5050 Amplifier</p> <p>SCREEN SOUND</p> <p>Speakers</p> <p>Left: (8) McCauley Monarc MLA3 Speaker</p> <p>Center: (8) McCauley Monarc MLA3 Speaker</p> <p>Right: (8) McCauley Monarc MLA3 Speaker</p> <p>Sub: (8) McCauley CSM88 double 18"</p> <p>Processing:</p> <p>(2) Lake LM26 System Processor</p>

LIVE SOUND

CONSOLE

- Digico SD12/96 with Dante and Waves cards
- Yamaha M7CL – Digital console (no outboard processing or effects)
48 mono inputs, 4 stereo inputs, 16 outputs, on-board Yamaha processing, EQ and effects

SPEAKERS

- (16) d&b audiotechnik V8 Loudspeaker (8 left, 8 right flown) – powered by D20
- (8) d&b audiotechnik V12 Loudspeaker (4 left, 4 right flown) – powered by D20
- (6) d&b audiotechnik V Subwoofer (3 left center, 3 right center flown) – powered by D20
- (2) d&b audiotechnik J Infra Subwoofer (1 left, 1 right ground stack in orchestra pit) – powered by D80
- (10) JBL AC28 Front Fills / under balcony fills - powered by QSC.
- (4) JBL AC28 Rear balcony fills – powered by QSC.
- (1) LM44 for system EQ.

STAGE AUDIO / MONITORS

- (4) L'Acoustics X12 Passive Coaxial Speaker (can be mixed from FOH – NO monitor console)
- (1) L'Acoustics LA4X Amplifier

AUXILIARY SPEAKERS

- (6) Mackie SRM 450 powered speakers for monitors (can be mixed from FOH – NO monitor console)
- Microphone / Stand / Cable package in house – enough for 1 typical band (NO wireless mics)

COMMUNICATIONS

- House intercom system with inputs at various locations, wired for two channels.
- Clear-Com base station and 5 single-channel headsets/belt packs.

ROAD CONSOLE PLACEMENT

- Located in rear of orchestra. Cable run from stage is 120 ft.

SENDS/RETURNS TO CONSOLE FROM STAGE

- Digico SD-Rack with 56 in / 24 outs
- 58 Channel Whirlwind isolated splitter – located Stage Left – 48 sends / 10 returns
Whirlwind W4 Monitor Split Out
- Whirlwind W4 58 channel FOH snake 150'
- Whirlwind W2 16 channel return snake 150'
- Whirlwind Sub-snakes with fan-outs
1 - 50' - 24 input / 4 return XLR
1 - 50' - 16 input / 4 return XLR
1 – 50' - 8 input XLR

MARQUEE

Marquee Electronic Message Display dimensions:

North and South Side:

GT6x-240X1020-6-RGB-SF Galaxy® Outdoor Electronic Message Center - GT6x Series - 6mm RGB

Matrix: 240 lines by 1020 columns

LED Color: RGB- 281 Trillion Colors

Display Configuration: SF - single one sided display

Frames per Second: 60

Cabinet Design: Single Section per face

Dimming: Automatic, Scheduled, or Manual

Paint: Semi-Gloss Black All Around

Readable Viewing Angle: 160 degrees horizontal x 90 degrees vertical

Active Area: 4' 10" H X 20' 5" W (Approx. Dimensions)

Optimal Viewing Angle: 140 degrees Horizontal x 70 degrees Vertical

Cabinet Dimensions: 5' 4" H X 20' 8" W X 0' 7" D (Approx. Dimensions)

Composition size: 1020 pixels (w) by 180 pixels (h)

Color mode: RGB

Resolution: 72 dpi (use high-resolution assets and/or vector graphics)

Preferred Static file format: PNG

Supported Static file formats: BMP, JPEG

Pixel aspect ratio: square pixels

Preferred Animated file format: AVI (uncompressed)

Supported Animated file formats: MP4, MOV

Frames Per Second: 30

Center Side:

GT6x-240X720-6-RGB-SF Galaxy® Outdoor Electronic Message Center - GT6x Series - 6mm RGB

Matrix: 240 lines by 720 columns

LED Color: RGB- 281 Trillion Colors

Display Configuration: SF - single one sided display

Frames per Second: 60

Cabinet Design: Single Section per face

Dimming: Automatic, Scheduled, or Manual

Paint: Semi-Gloss Black All Around

Readable Viewing Angle: 160 degrees horizontal x 90 degrees vertical

Active Area: 4' 10" H X 14' 5" W (Approx. Dimensions)

Optimal Viewing Angle: 140 degrees Horizontal x 70 degrees Vertical

Cabinet Dimensions: 5' 4" H X 14' 8" W X 0' 7" D (Approx. Dimensions)

Composition size: 660 pixels (w) by 180 pixels (h)

Color mode: RGB

Resolution: 72 dpi (use high-resolution assets and/or vector graphics)

Preferred Static file format: PNG

Supported Static file formats: BMP, JPEG

Pixel aspect ratio: square pixels

Preferred Animated file format: AVI (uncompressed)

Supported Animated file formats: MP4, MOV

Frames Per Second: 30

COUNTERWEIGHT SYSTEM

Line #	Distance from Smoke Pocket	Arbor Capacity	Notes
1	5'	750 lb.	MAIN DRAPE: Burgundy velour drape with gold fringe; manually operated – can fly or travel open-closed. This is the first line set behind the smoke pocket
2	6' 6"	750 lb.	1 st ELECTRIC: Twelve S4 lekos 750w
3	7' 1"	850 lb.	LEGS: Black velour 30' x 15'
4	7' 7"	850 lb.	BORDER: Black velour 12' x 60'
5	8' 6"	750 lb.	SCREEN DRAPE / MOTORIZED TRAVELER: Gold velour drape can travel by motor or fly manually.
6	10'	750 lb.	CINEMA SCREEN: permanently used for perforated screen. Screen frame and permanent masking are 18" wide.
7	11'	750 lb.	BORDER: Black velour 12' x 60'
8	12' 6"	750 lb.	LEGS: Black velour 30' x 15'
9	14'	850 lb.	EMPTY
10	15' 6"	750 lb.	EMPTY
11	17'	750 lb.	BORDER: Black velour 12' x 60'
12	18' 6"	750 lb.	LEGS: Black velour 30' x 15'
13	20'	750 lb.	EMPTY
14	22'	750 lb.	2 nd ELECTRIC: Twelve S4 lekos 750w
15	23' 1"	850 lb.	EMPTY
16	24' 7"	850 lb.	BORDER: Black velour 12' x 60'
17	25' 6"	850 lb.	LEGS: Black velour 30' x 15'
18	29'	750 lb.	EMPTY
19	30' 4"	750 lb.	CYCLORAMA: White seamless muslin 30' x 54'
20	31'	750 lb.	FLAT BLACK: 25 oz. velour, no fullness, 2 pc 30' x 27'

PRODUCTION GUIDELINES

PARKING

All parking lots adjacent to the theatre are separately operated. Arrangements for rental and use of these lots can be made with their respective operators or can be included in the rental contract for a fixed charge.

Suggested parking for production and catering trucks is the two lots directly behind the theatre on Spring Street (lots 843 and 839 on the parking map). Contact the theatre or the lot operators for more information.

The alley behind the theatre is privately owned and is in use by the garment businesses in the adjacent buildings. No production vehicles may park in the alley. Any cables from generators or trucks in the parking lots must be routed under the alley using the 12" diameter permanent tube or at least 16 ft. overhead using scaffolding and/or trussing.

ELECTRICAL

Productions are free to use the existing house lighting and electrical outlets. Any additional power required can be supplied by using one or more of the four theater disconnects at an additional charge. Generators should be located in the lot directly behind the lobby door on Spring Street (lot 839 on the parking map). There is a run of 4/0 cable already in place in a tunnel under the alley. This will require turn-arounds as it is oriented to feed power to the parking lot. Any additional cables must be routed at least 16 ft. above the alley.

Cables may enter the building through the openings in the 'animal room' near the stage door. However, any cables entering through the ground-level doors must be disconnected each night so that the doors may be completely closed. There is a separate 12" pipe for routing camera cables into the plenum space under the seats.

STAGE EQUIPMENT AND TECHNICIANS

Stage technicians are supplied by SAS – contact Mike Klousia at (562)292-6204. SAS can supply lighting techs, audio techs, stagehands, loaders, lighting designers, follow-spot operators and other technical personnel. If any in-house lighting and sound equipment is used SAS personnel must operate that equipment. If outside equipment is used, a minimum crew of three department heads from SAS – lighting, sound and stage is still required; there may also be labor charges for removing and restoring house equipment.

RIGGING

Because of the risk of accidental injury, only SAS personnel or qualified and insured riggers are allowed to operate the stage counterweight system. Any temporary rigging must be installed by qualified and insured riggers. Proof of insurance may be required. SAS can supply these riggers through a qualified and insured rigging company. Temporary rigging may require an engineer's approval based on the weight and/or the number of points being hung.

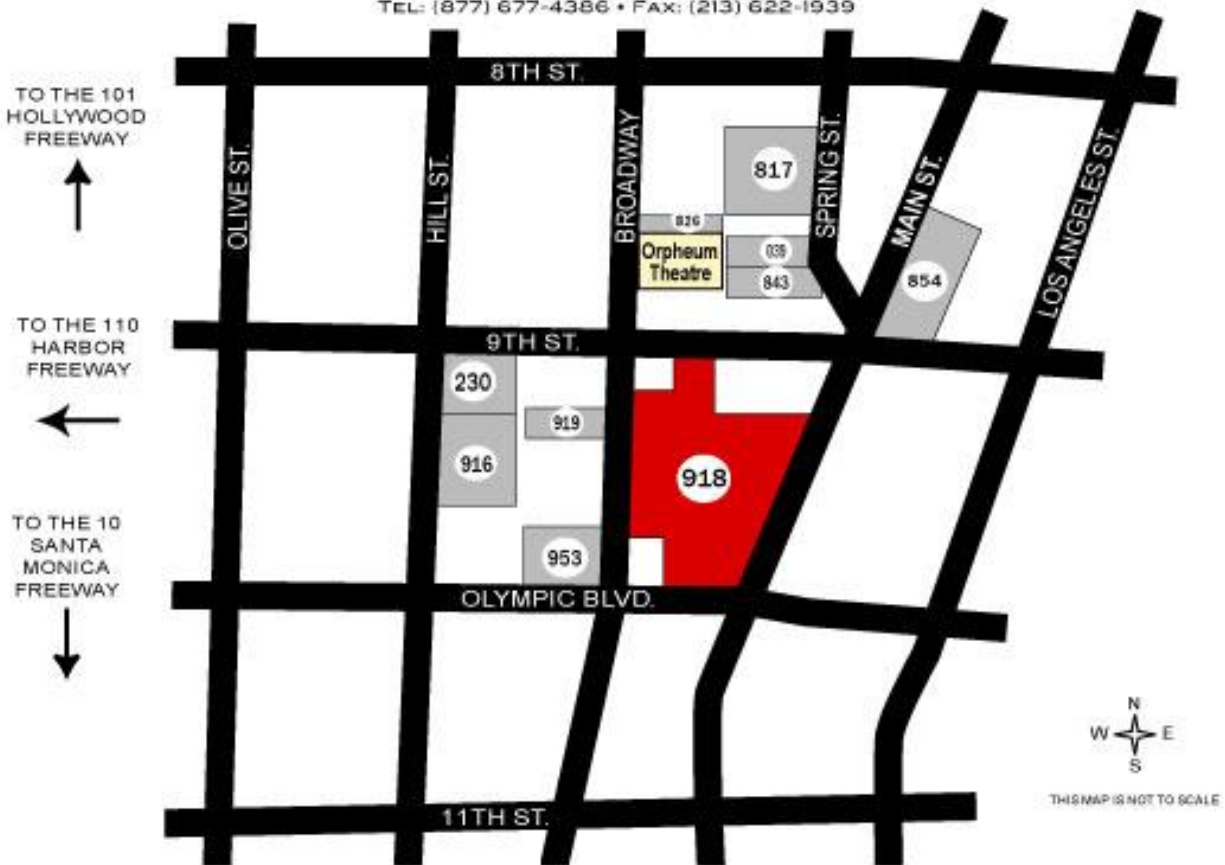
MISCELLANEOUS

- No holes may be made in the walls or ceiling of the lobby or auditorium, or the stage floor.
- The first five rows of seats in the orchestra section are removable in sets of 2 or 3. There is also a section of seats in aisle 3 that can be removed for a camera position. No other seats are removable. If time permits, the removal can be done beforehand by SAS staff for a charge. Otherwise the time must be budgeted into the load-in. The seats in aisle 3 are removed by a professional seating company and must be contracted for in advance.
- The theatre has heating, ventilation and air conditioning. Air conditioning is normally supplied without charge on filming or event days only.
- Lobby and backstage manual elevators are manually operated, and must be operated by one of the theatre staff.
- Layout board must be used to cover all patterned carpet in the lobbies during location filming or large event load-ins and load-outs.

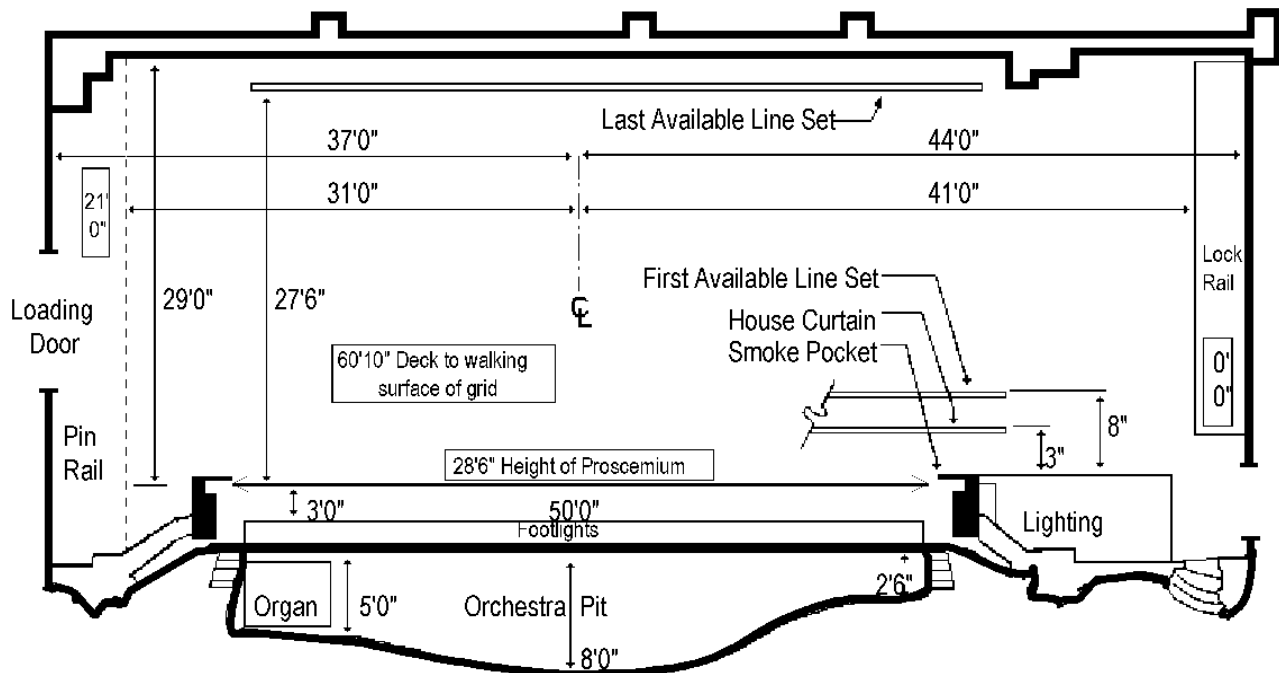
PUBLIC PARKING LOTS IN THE IMMEDIATE VICINITY OF

THE Orpheum[®] THEATRE

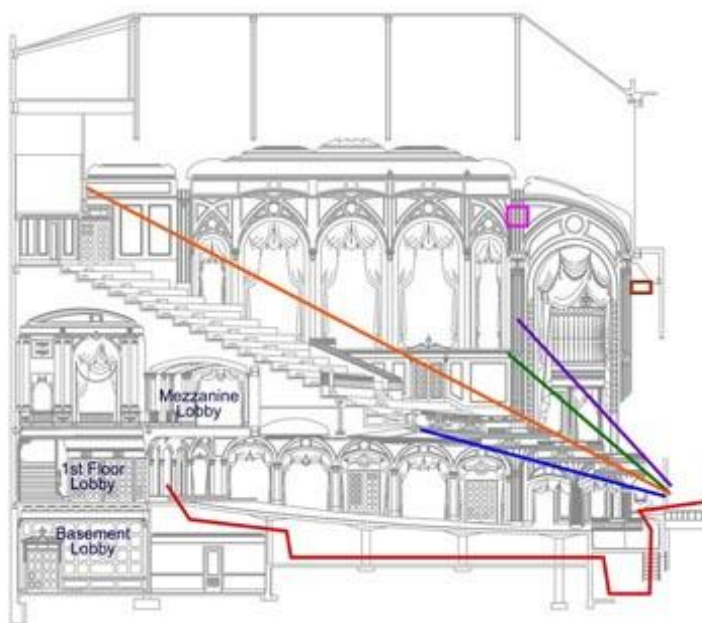
842 S. BROADWAY, LOS ANGELES CA 90014
TEL: (877) 677-4386 • FAX: (213) 622-1939



Joe's Auto Parks (213) 629-3263	817 S. Spring St.	95 Spaces + 95 Stacked	200' x 155'
Joe's Auto Parks	839 S. Spring St.	37 Spaces + 18 Stacked	70' x 155'
Joe's Auto Parks	843 S. Spring St.	34 Spaces + 68 Stacked	120' x 155'
Joe's Auto Parks	826 S. Broadway	26 Spaces	50' x 148'
Joe's Auto Parks	918 S. Broadway	420 Spaces - Unavailable	
Joe's Auto Parks	919 S. Broadway	37 Spaces	
Joe's Auto Parks	953 S. Broadway	67 Spaces + Stacking	
Athena Parking (213) 622-6780	230 W. 9th St. (Parking Structure)	300 Spaces	
Joe's Auto Parks	916 S. Hill St.	101 Spaces + Stacking	
Joe's Auto Parks	854 S. Main St.		



STAGE DIAGRAM
(not to scale)



FOH motor points
54 ft. above orchestra floor
24 ft. from the front of stage

Proscenium motor points
36 ft. above stage floor

Distance from FOH truss to front of stage with truss at 35 ft. above orchestra floor
37 ft.

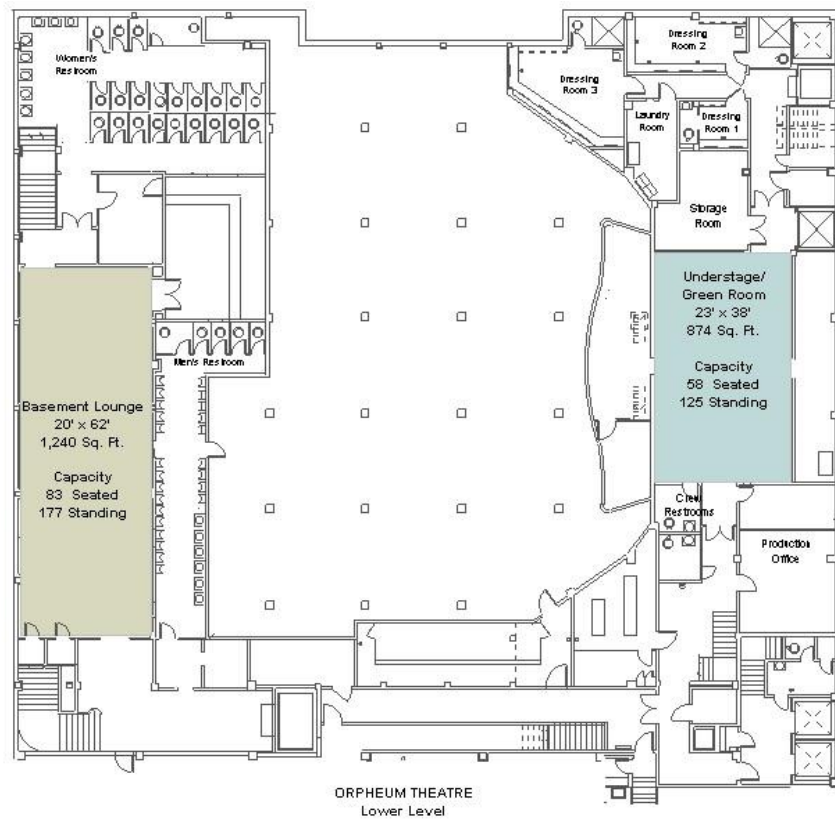
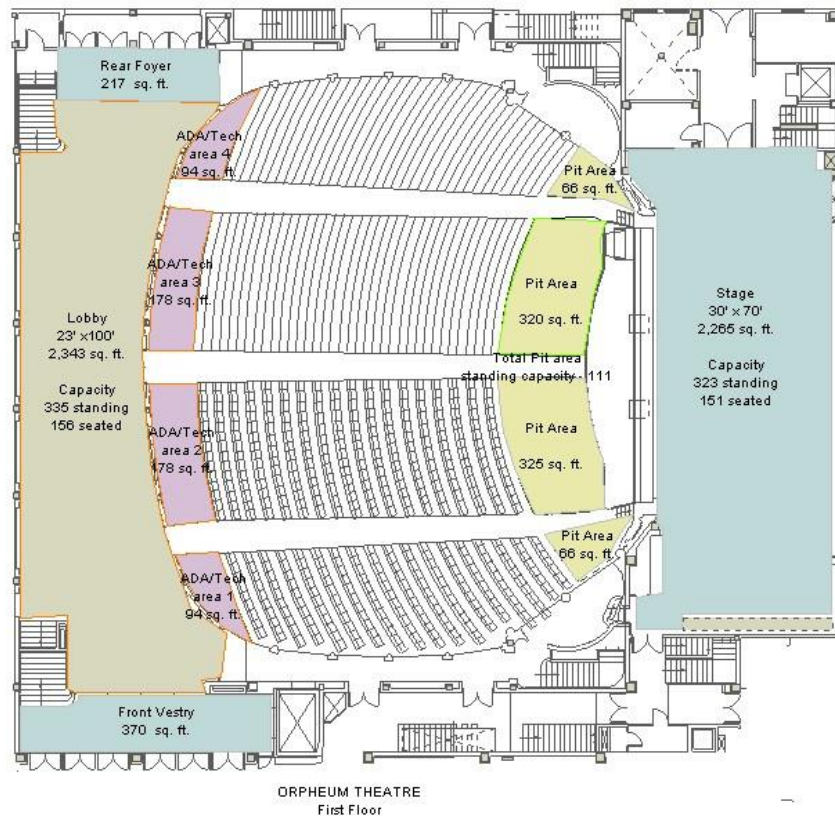
Distance from side boom position to front of stage
55 ft.

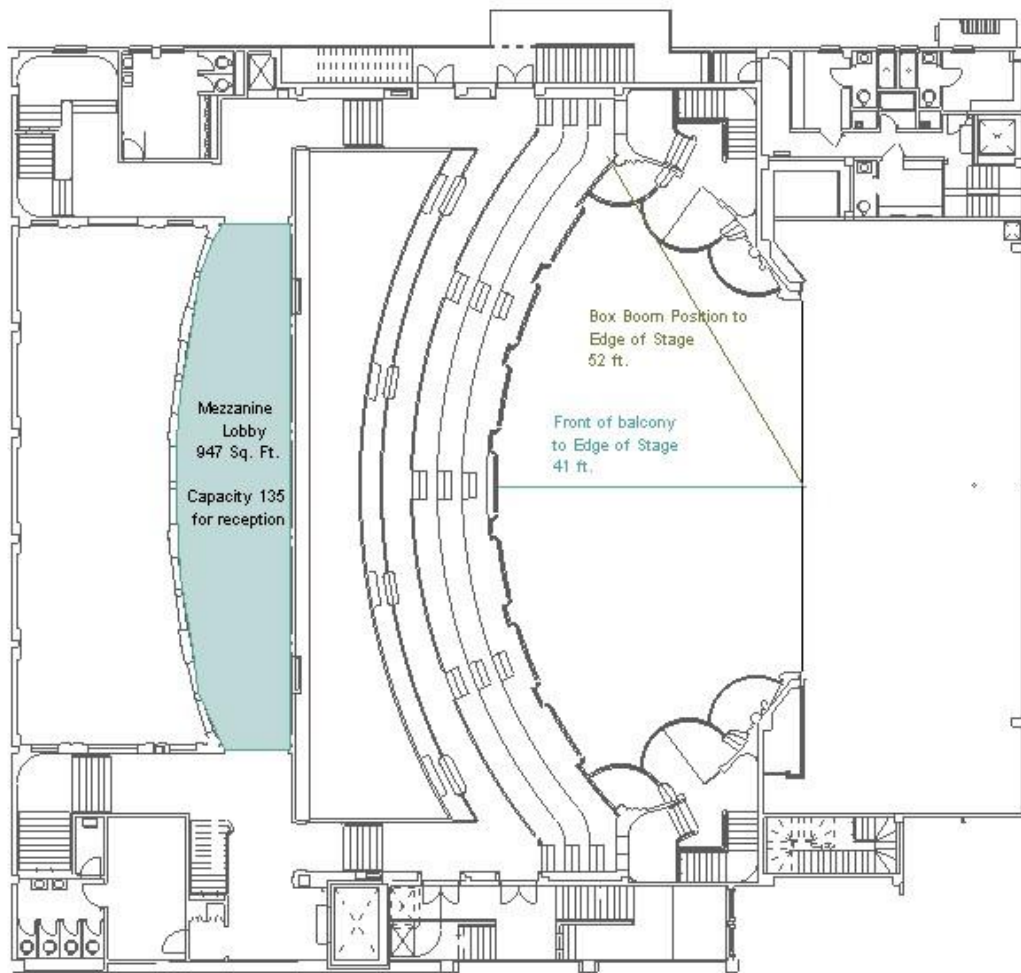
Distance from front of projection booth to front of stage
110 ft.

Distance from front of balcony to front of stage
42 ft.

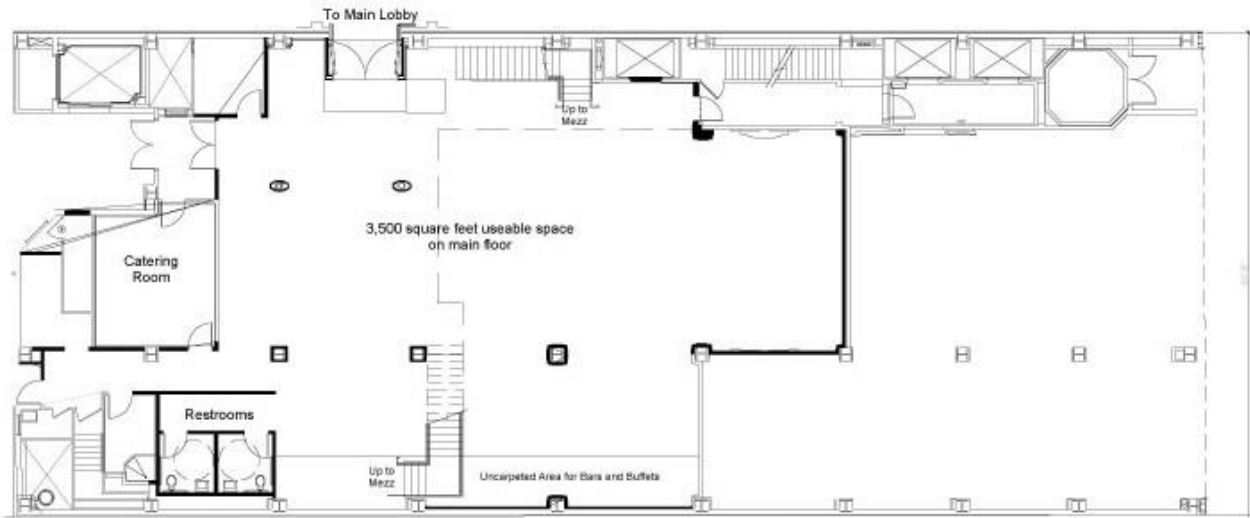
Distance from rear tech area to front of stage for cable run
118 ft.

THE ORPHEUM THEATRE Section View

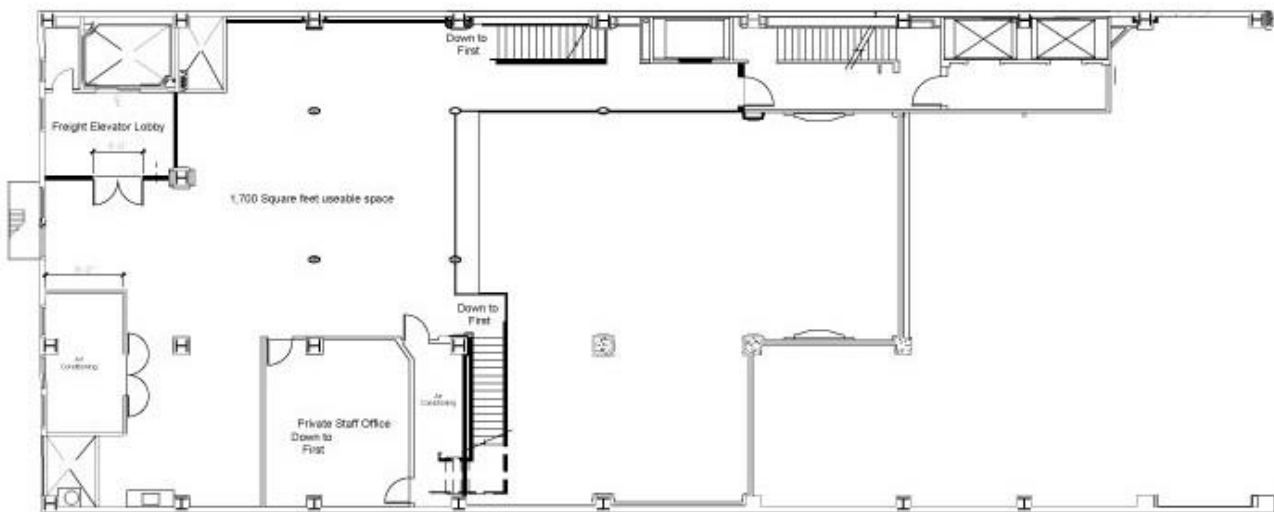




ORPHEUM THEATRE, Los Angeles
Mezzanine Floor



Orpheum Theater
Los Angeles
The Orpheum Club
First Floor



Orpheum Theater
Los Angeles
The Orpheum Club
Mezzanine Level

